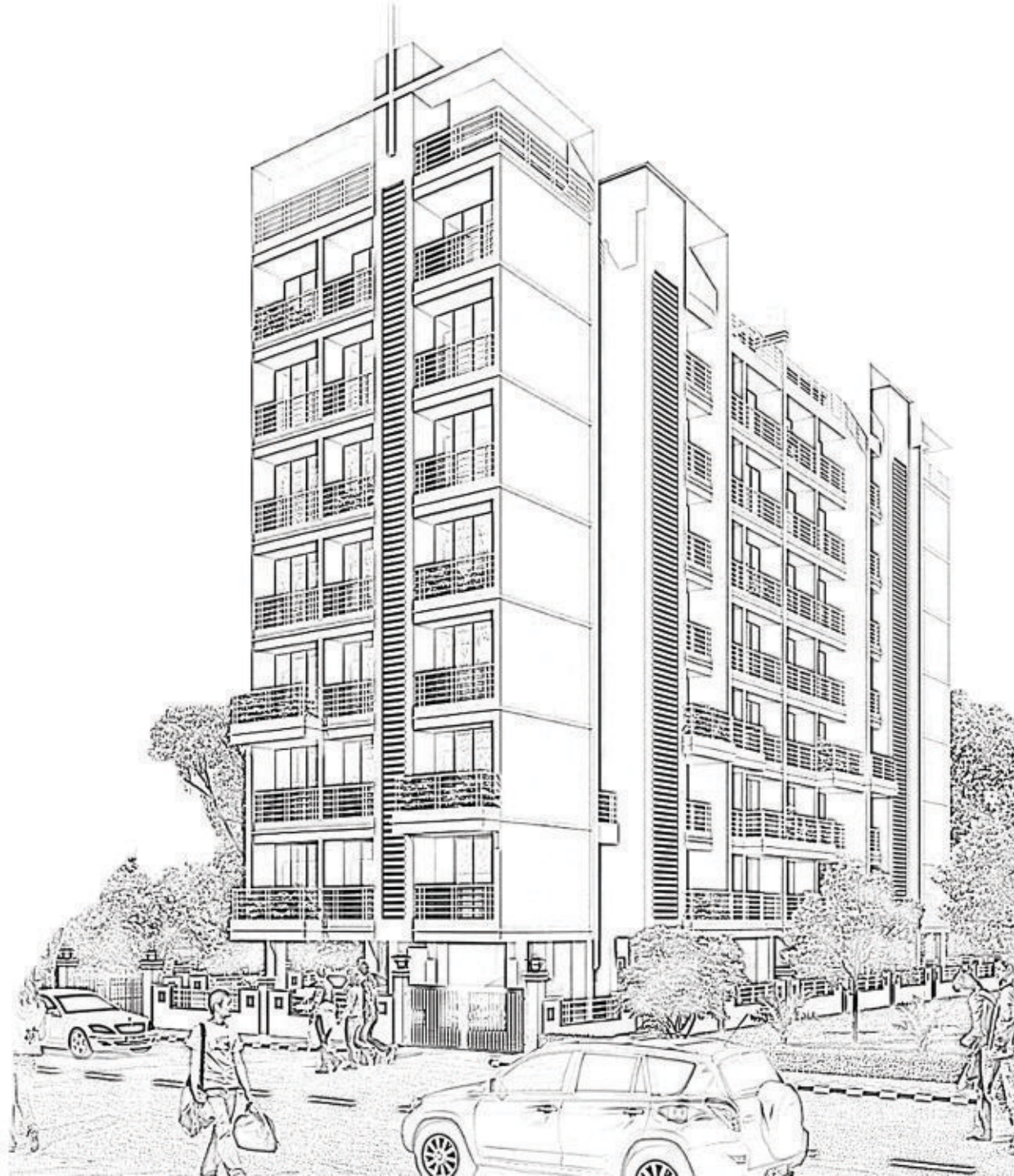


# Shiv Shankar | Tulip

Plot No-160C, Navade, Phase- II,  
Navi Mumbai

Luxury & Excellence....

For those special one's, who aspire for big in their life!!





# Shiv Shankar | Tulip

Plot No-160C, Navade, Phase- II,  
Navi Mumbai

## Project Highlights

- Clear title CIDCO transfer plot
- G+7 Storied Pure Residential project
  - 1BHK & 1RK flats
- Quality construction with earthquake resistant RCC structure
- Excellent planning with no wastage in all rooms • Branded High Speed Elevators
  - Ample Space on Ground Floor for Parking
  - Power backup for Lifts & Common area

A great outlook that you've  
never Experienced

### Location Advantages

- Located off old Mumbai Pune Road (Nh4) & Touching Kharghar node
- Planned by india's best city planner CIDCO
- Opposite Nawade Railway Station
- 20 mins. drive to prop. Navi Mumbai International Airport
- 10 mins. drive from Mumbai - Pune Mumbai Goa Express highway
- Proposed trans harbour link connecting south mumbai to dronagiri is in process
- Supenor Educational & Medical Facilities in proximity
- Upcoming Asia's largest Central park & golf course lies in the proximity

# Shiv Shankar Tulip

Plot No-160C, Navade, Phase- II,  
Navi Mumbai





## The Amenities

### LIVING & BEDROOM

- 6" Thickness Exterior and 4" Thickness Internal walls.

### FLOORING

- 24" x 24" Vitrified flooring in all rooms.
- Anti Skid Tiles in attached Terrace Area & Bathroom .

### KITCHEN

- Granite Kitchen platform with S.S. Sink
- Tiles upto 3 ft. above Kitchen Platform

### DOOR & WINDOWS

- Decorative Laminated Flush main doors
- Aluminum Powder coated sliding Windows with Tinted Glass Granite window sill.

### ELECTRIFICATION

- Concealed copper wiring with MCB
- Adequate electrical points in all rooms
- ISI modular switches

### WALLS & PAINTS

- Putty & Gypsum finished internal walls
- Plastic Emulsion paints for internal wall of good quality.

### BATH & WC

- Tiles in Bathroom & W.C. 6 ft. Height.
- Branded sanitary wares of reputed make

### WATER

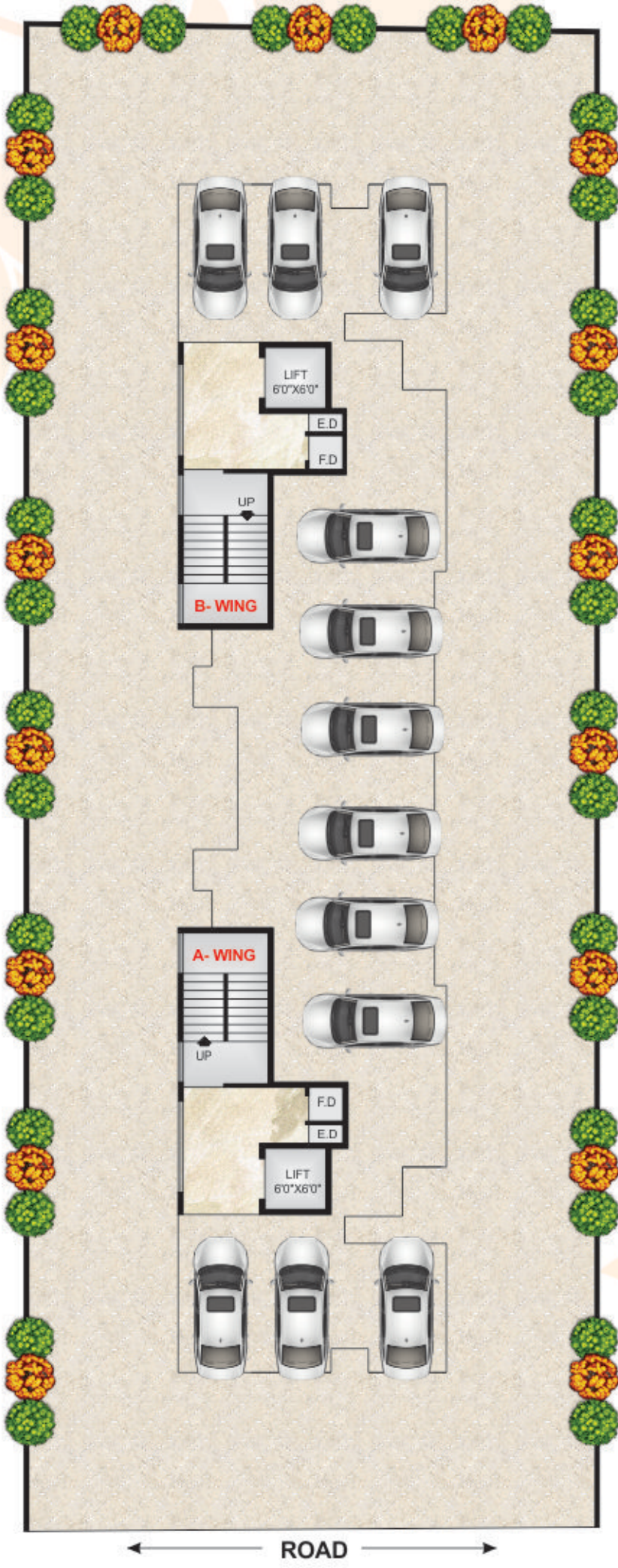
- Underground and Overhead water tank with adequate storage capacity

### TERRACE

- Special water proofing treatment with china chips flooring on top floor.

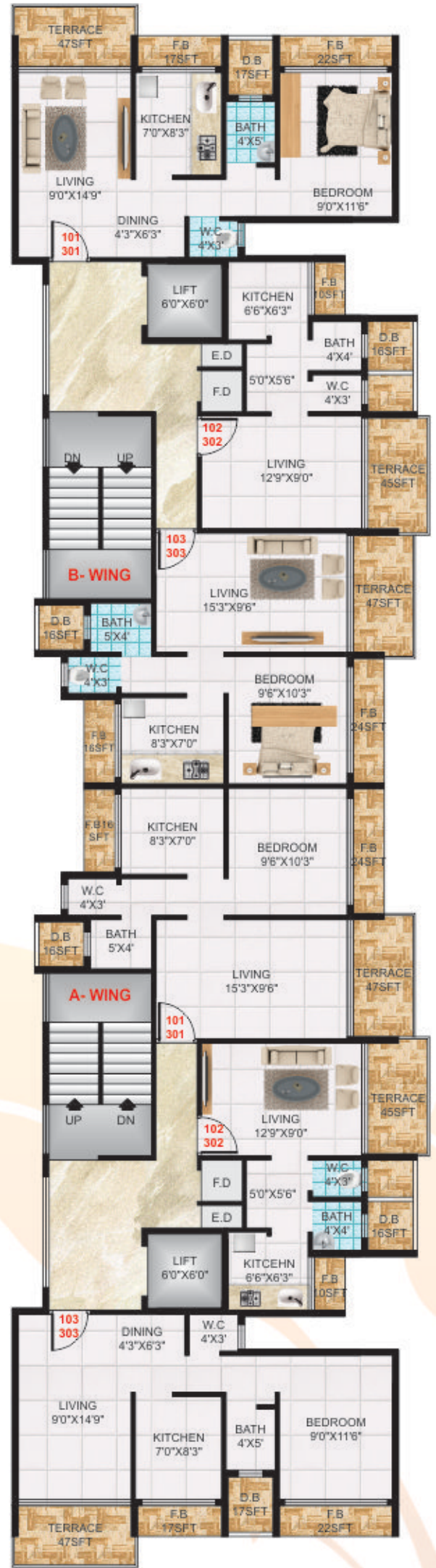
### PLUMBING

- Concealed Plumbing Work Reputed make Bathroom Fitting.



GROUND FLOOR PLAN

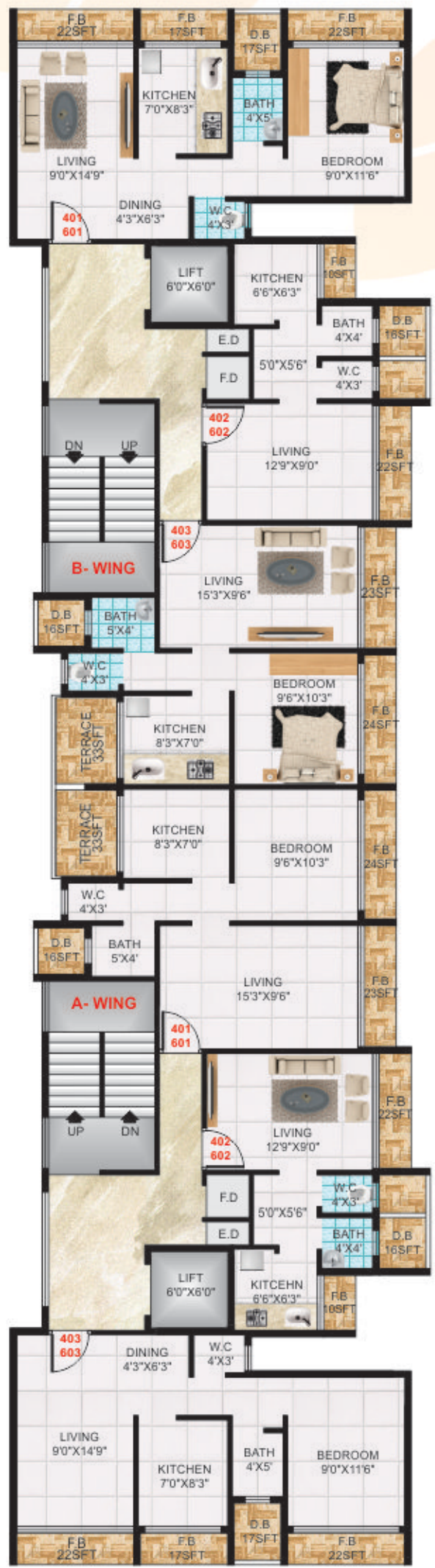
1ST & 3RD FLOOR PLAN



4TH & 6TH FLOOR PLAN



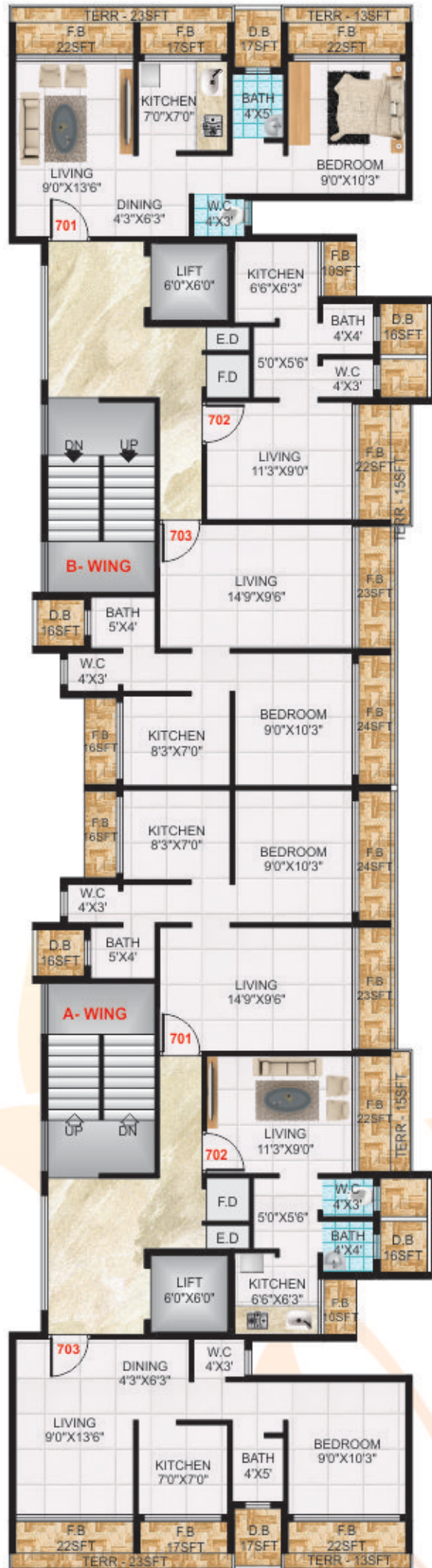
SECOND FLOOR PLAN

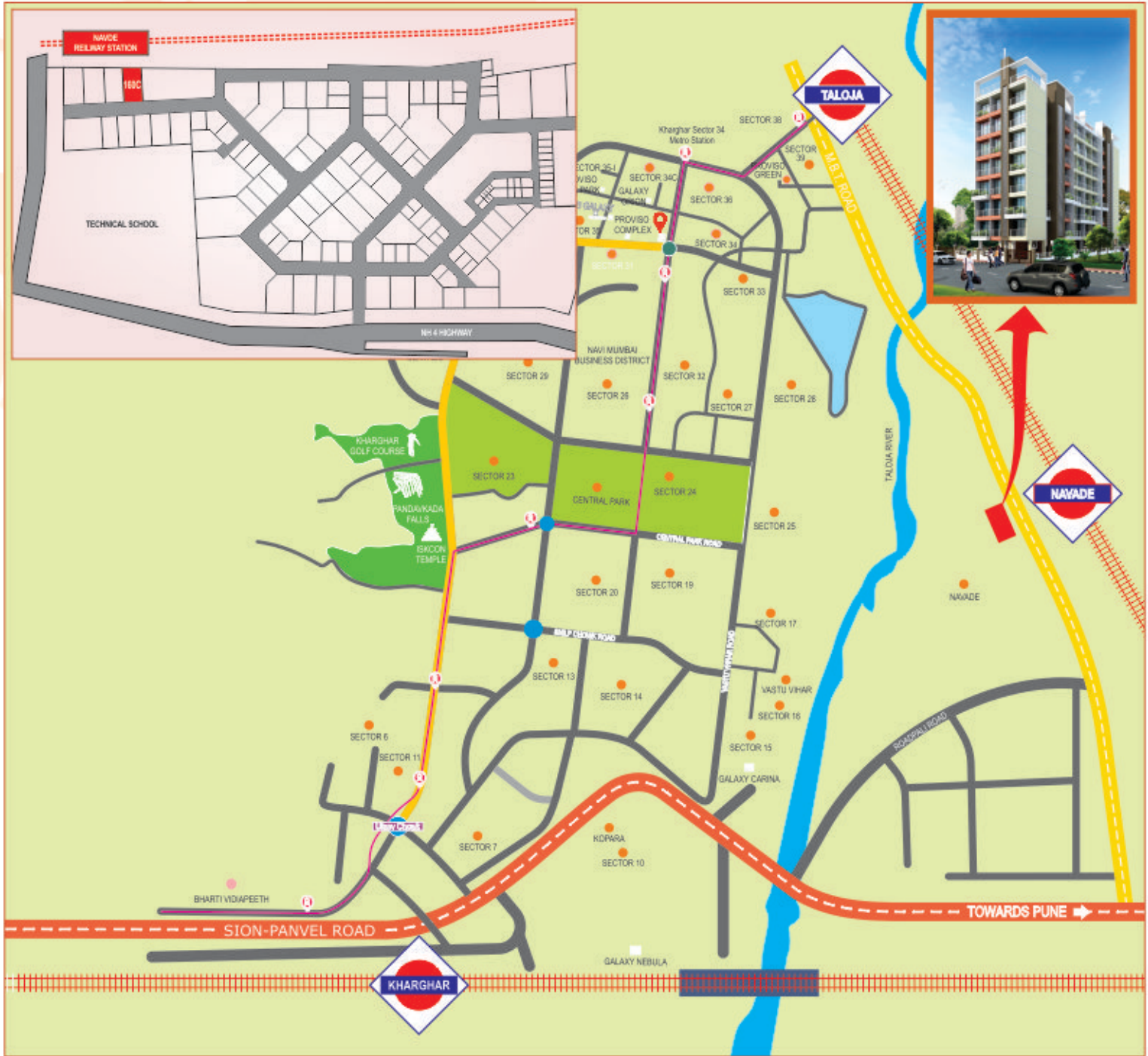




FIFTH FLOOR PLAN

SEVENTH FLOOR PLAN






**MAHA RERA REGISTRATION NO.**  
**P52000025766**

Project by

**Abhishek Enterprises**

**BUILDERS & DEVELOPERS**

**Office Add. -**

#603, Plot no.87, Shelton Cubix, Sector-15, CBD Belapur, Navi Mumbai-400614.

**Site Office -**

Plot no.160C, Navade, Phase-II, Navi Mumbai-410208.

**Email :** abhishekenterprises.1976@gmail.com | **Website :** www.abhishekenterprises.us

**Architect :** TRIARCH DESIGN STUDIO | **RCC Consultant :** ADHARSHILA CONSULTANTS

**Call : 9819713902 / 8090799770 / 8080241671**